

SCAPA Community Planning Assistance Team Overview

What is CPAT?

Community Planning Assistance Team (CPAT)

- Established program by SC-APA
- Modeled after APA program
- Assists SC communities with limited planning resources
- Staffed by volunteer members
- Annual application process

Recent Projects:

2021

Laurens County

2023

Walhalla, SC



What is CPAT?

- Projects vary
- Timelines vary
- CPAT Committee chair:
 - Works with communities on scope and project
 - Assembles SCAPA Team
- Team executes project

To Apply:

- Application Online
- Project Description and Funding Level
- \$25 Application Fee
- Review and selection by SC-APA CPAT Executive Committee



Laurens County Development Corporation (LCDC)

Asset Mapping Project - 2021

In 2021, LCDC called on the CPAT team to assist with a County-wide effort to identify community assets.

The CPAT team first visited Laurens County and consulted with local leaders in July 2021.

After several visits and much research, the CPAT team delivered a detailed asset StoryMap as the final product.

Existing Efforts

In recent years, Laurens County has sharpened its focus in planning community assets and growth.

- Forming a **Planning Commission**
- Two **Main Street** programs: City of Clinton and City of Laurens.
- **Regular engagement** with and of **community members**- to include a **Livability Team**.
- An **economic development** organization that **recognizes the value of active community planning**
- Several **planning-related ordinances** in place
- **Capital improvements planning** per the Laurens County Capital Sales Tax Preliminary Implementation Plan (January 2021).

Community Assets

What are community assets?

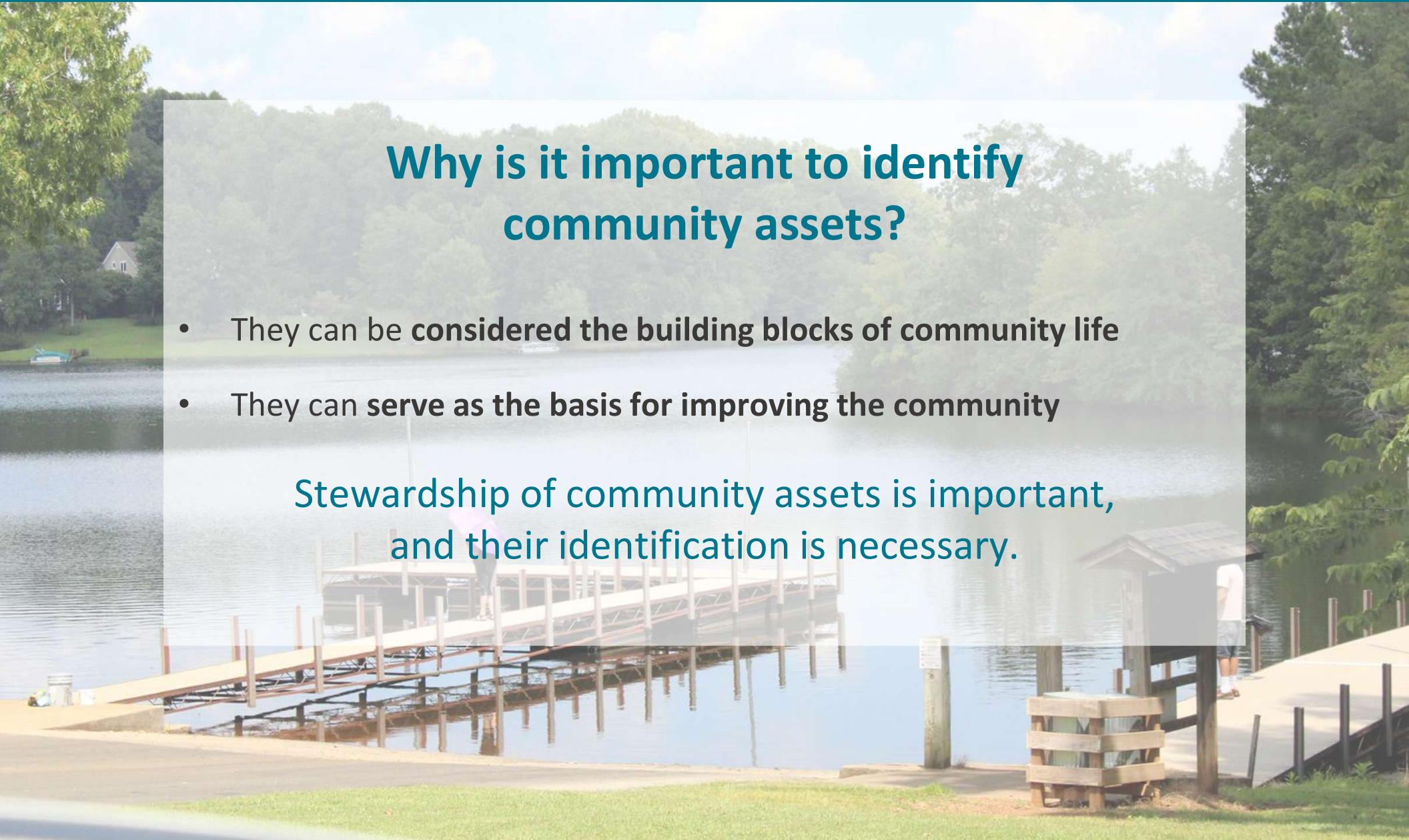
- **Resources** of the community
- Anything that **enhances the quality of community life.**
- Can be a **significant place or structure**, a **feature of the landscape**, a **business that provides jobs**, or even the **people of the community.**

Community Assets

Why is it important to identify community assets?

- They can be **considered the building blocks of community life**
- They can **serve as the basis for improving the community**

Stewardship of community assets is important,
and their identification is necessary.



Recommendations

Laurens County has a wide variety of community assets to include:

- Distinctive cultural and natural features
- A thriving industrial base
- Unique local businesses
- An expanding housing market
- A host of community events that take place in all seasons in every corner of the county.



Base StoryMap Link:

The team then developed a Story Map of
community assets:

<https://storymaps.arcgis.com/stories/bb9ef3b5a37e49bb83fc755dd3d8716e>

Laurens StoryMap Link:

<https://growlaurenscounty.com/about-us/visit-laurens-county/>

COMMUNITY PLANNING ASSISTANCE TEAM

Walhalla Green Space & Historic Center Planning Project



Walhalla, SC
Jan 28, 2023

Walhalla Green Space & Historic Center Planning Project Community Charette and Report – 2022-2023

2022 Selection – Project Completion 2023

Applicant: Main Street Walhalla

Project: Walhalla Green Space & Historic Center Planning Project

Scope: Community Charette and Report of Recommendations

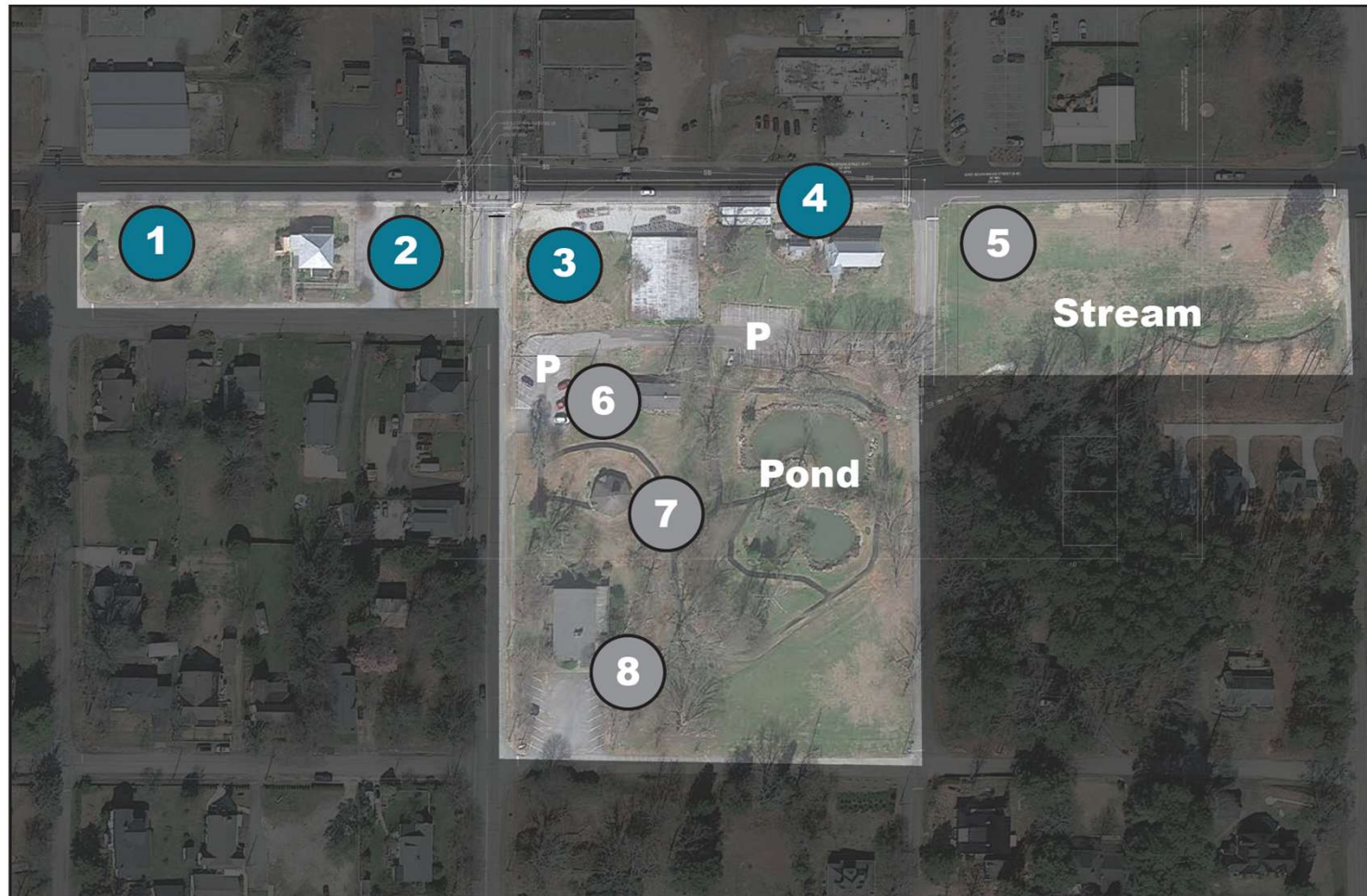
**Depot Park area comprised of city-owned properties that span 3
city blocks and New Wanderweg Greenway Trailhead**

- Programs and Activities**
- Connectivity Improvements**
- Built Environment Improvments**

Walhalla Green Space & Historic Center Planning Project

Initial Mapping-Inventory and Analysis

Site Features



Walhalla Green Space & Historic Center Planning Project

Initial Mapping-Inventory and Analysis

1



2



3



4



Walhalla Green Space & Historic Center Planning Project

Initial Mapping-Inventory and Analysis

1



2



3



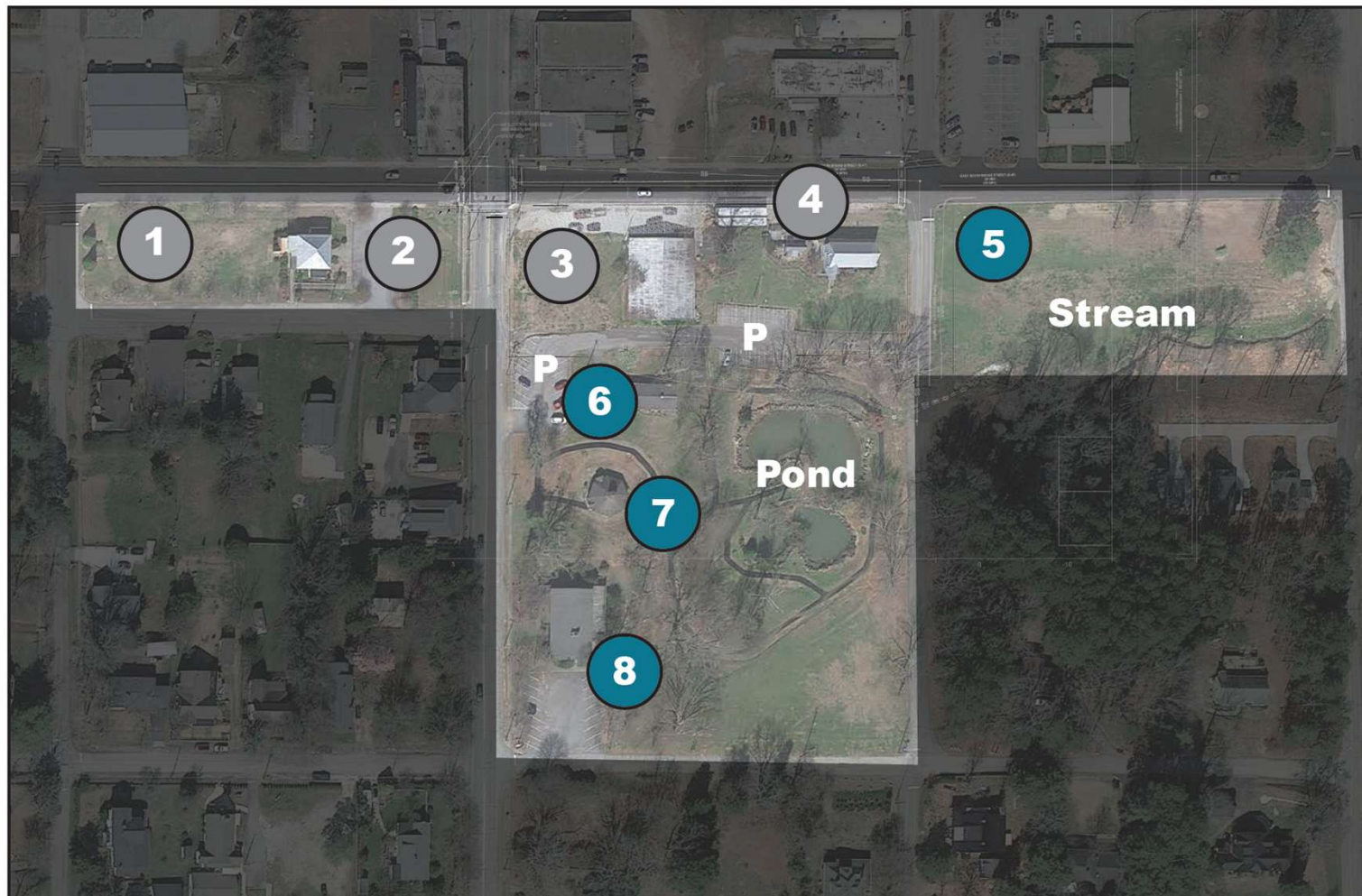
4



Walhalla Green Space & Historic Center Planning Project

Initial Mapping-Inventory and Analysis

Site Features



Walhalla Green Space & Historic Center Planning Project

Initial Mapping-Inventory and Analysis

5



6



7



8

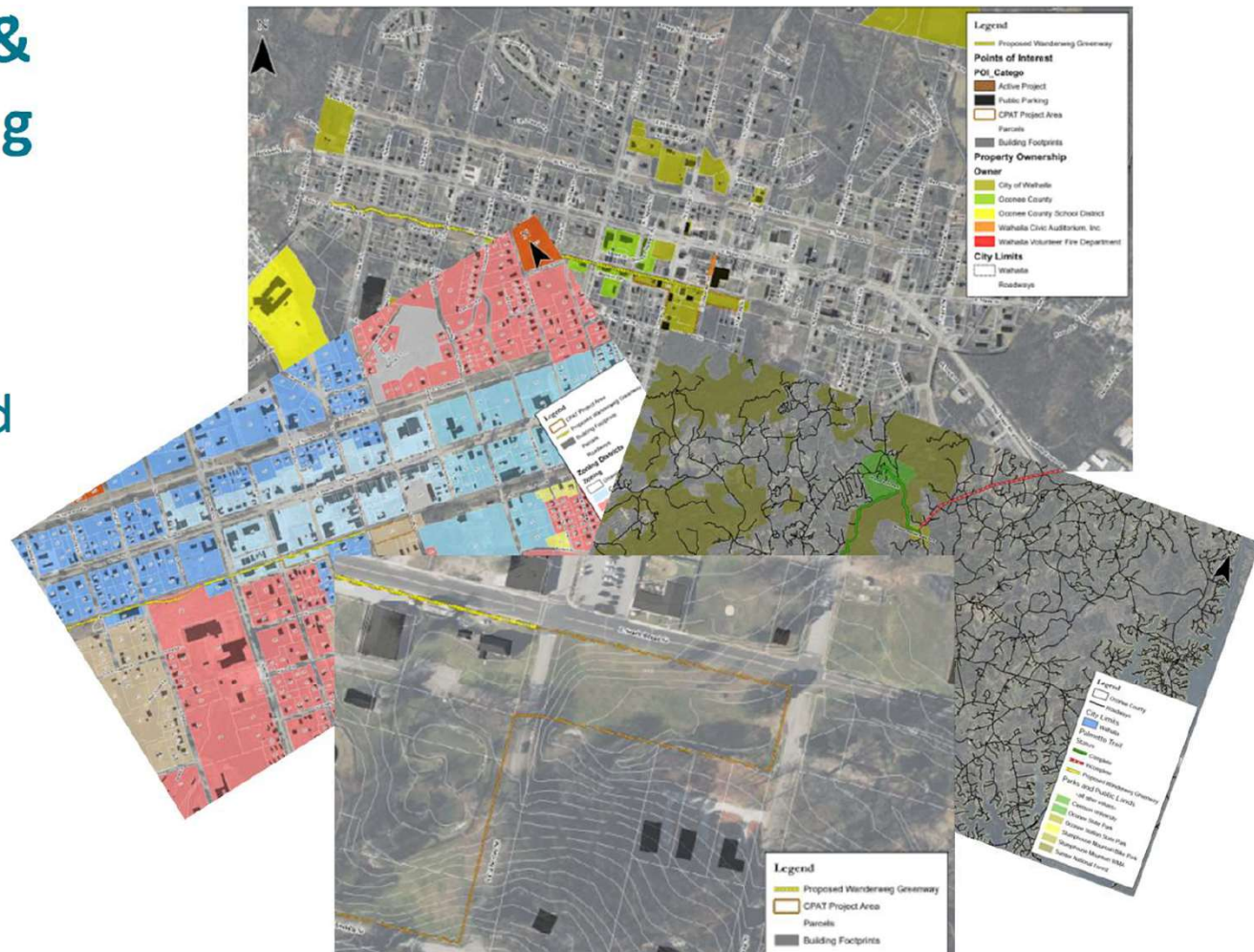


Walhalla Green Space & Historic Center Planning Project

Initial Mapping-Inventory and Analysis

Walhalla Green Space & Historic Center Planning Project:

- Initial Mapping:
 - Site Context
 - City and County owned properties
 - Elevations
 - Transportation
 - Land Use
 - Trail Networks



Walhalla Green Space & Historic Center Planning Project Community Charette



Setup: Split into the three subject area groups and set up separate tables in different corners of the room

Discussion and input collection was led by two CPAT members at each table. Each input station was equipped with maps and input was collected utilizing post-its, dots and flip chart pads.

Over twenty enthusiastic participants provided a wealth of comments and suggestions.

Walhalla Green Space & Historic Center Planning Project Recommendations



Connectivity

Safety of South Catherine St block

Crosswalks

Sidewalks

- Road Crossings
- Road Utilization
- Pedestrian and Bicycle Connections
- Street Closing
- Connection to Stumphouse Mountain Bike Park and Palmetto Trail

Walhalla Green Space & Historic Center Planning Project Recommendations



Programming & Activities

Performance Stage

More festivals and outdoor activities

Larger programmed events and improvement that make the park more usable on a day-to-day basis.

- A multi-purpose outdoor space for music, movies, teaching, and other performances
- Considered to be the trailhead of the greenway, the opportunity to strengthen the connection to the downtown
- Also develop the three blocks along Broad

Walhalla Green Space & Historic Center Planning Project Recommendations



Built Environment

Farmer's Market

Amphitheater

Concert Space

- Add lighting for safety and ambience
- Public fountain
- Amphitheater in park
- Benches along walking trail
- Pet friendly
- Expand Wanderweg Trailhead parking
- Outdoor movie at Park on Main/College
- RR trestle/bridge theme for park
- String lighting around trailhead

Walhalla Green Space & Historic Center Planning Project Recommendations



Built Environment

Farmer's Market

Amphitheater

Concert Space

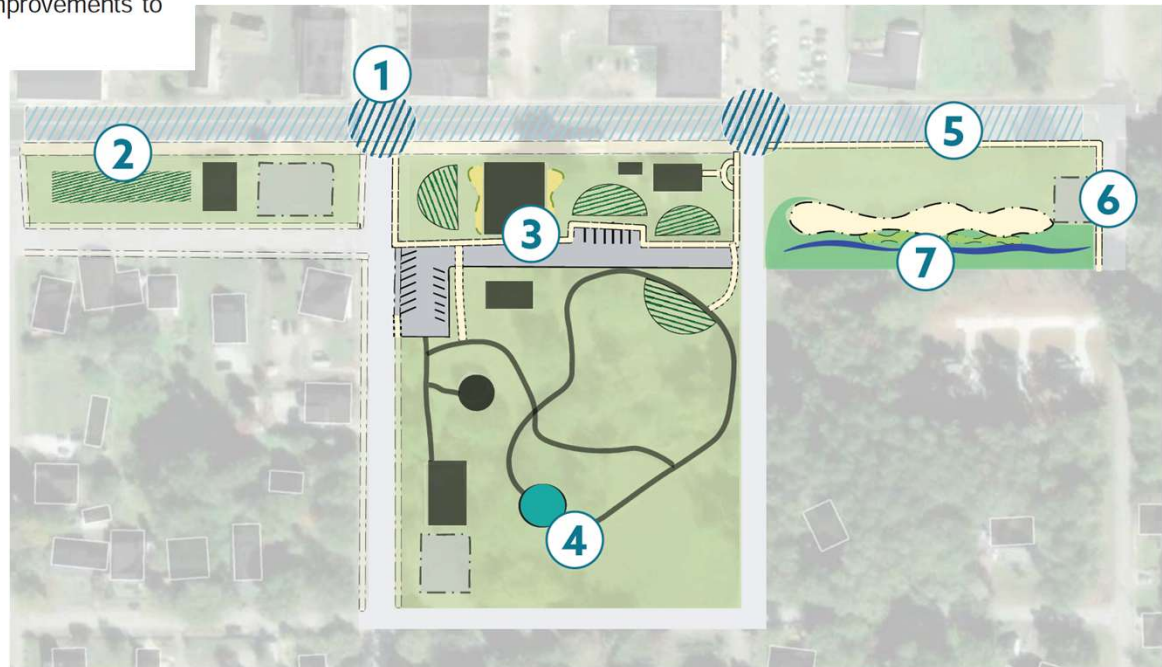
- Community Garden
- Public Art, sculpture and murals
- Park to sell snacks and drinks
- Bike parking downtown @ trailhead
- Seasonal decorations
- Better signage and wayfinding
- ADA for sidewalks and sidewalk repair

Walhalla Green Space & Historic Center Planning Project

Short/Mid-Term

- ① Add on street parking and striped crosswalks on East Broad Street. Start process to obtain Catherine Street from SCDOT.
- ② In hatched areas, use temporary installations such as removable stages, vendor areas and power connections to facilitate programs and activities recommendations, such as movie night on the event lawn behind the Main Street Office and performances/concerts. Utilize these areas to expand existing festivals.
- ③ Improve internal site circulation for motorists and pedestrians. Consider resurfacing, reconfiguring, and restriping existing parking by the Old St. John's Meeting House and Lion's Clubhouse. Add additional pathway/sidewalk connections from the new Greenway to these parking locations and the existing scenic pond pathway.
- ④ Add general play/sculptural areas around scenic pond path.
- ⑤ Add a sidewalk connection along East Broad Street and Spring Street.
- ⑥ Add a parking area on Spring Street.
- ⑦ Clean up landscaping around the stream and provide improved access into the site.

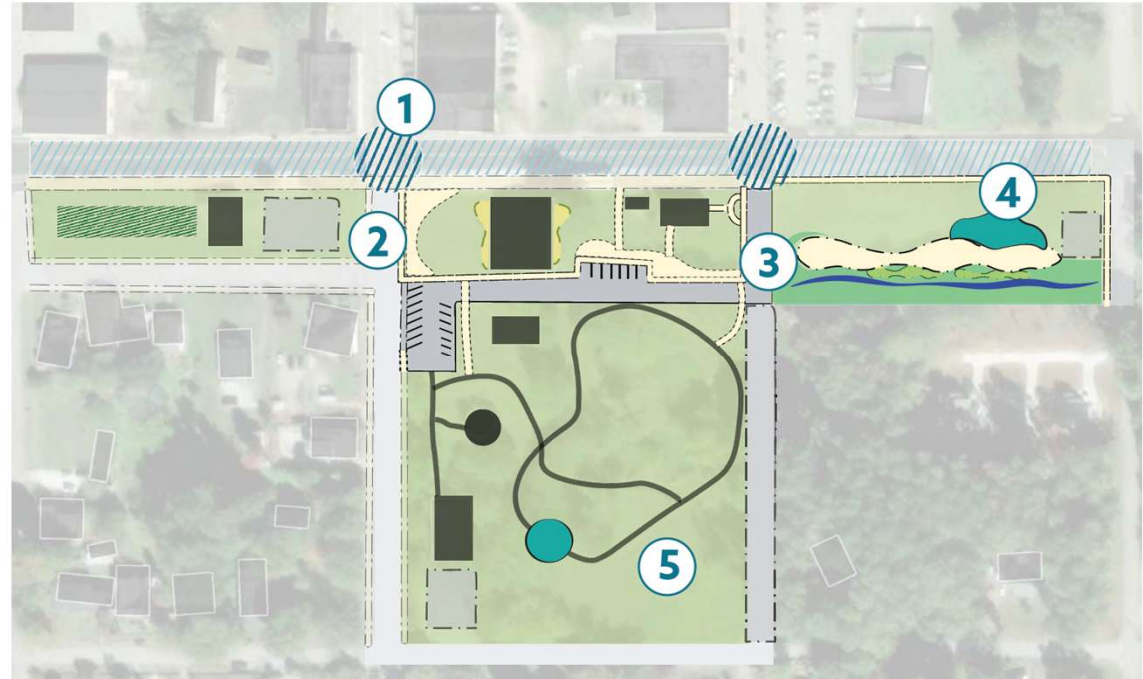
Consider architectural improvements to the Lion's Clubhouse, like board and batten siding, which is similar to other existing structures. Utilize landscape improvements to soften architectural elements of the site.



Walhalla Green Space & Historic Center Planning Project

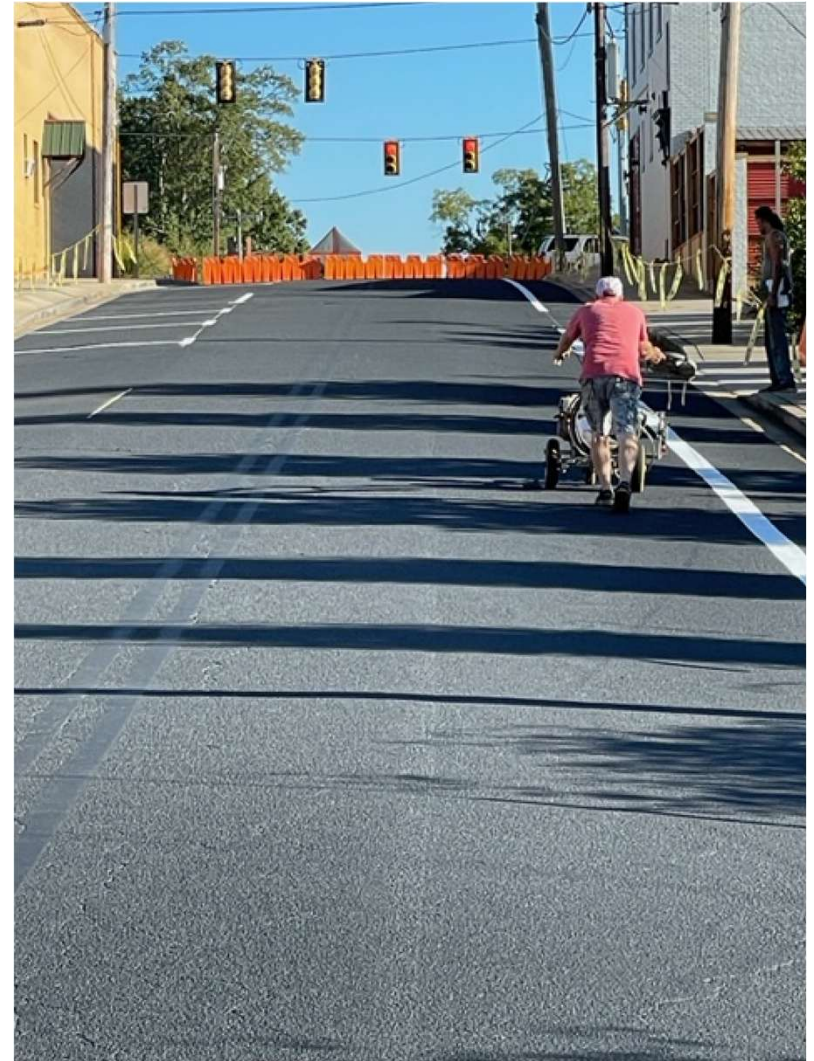
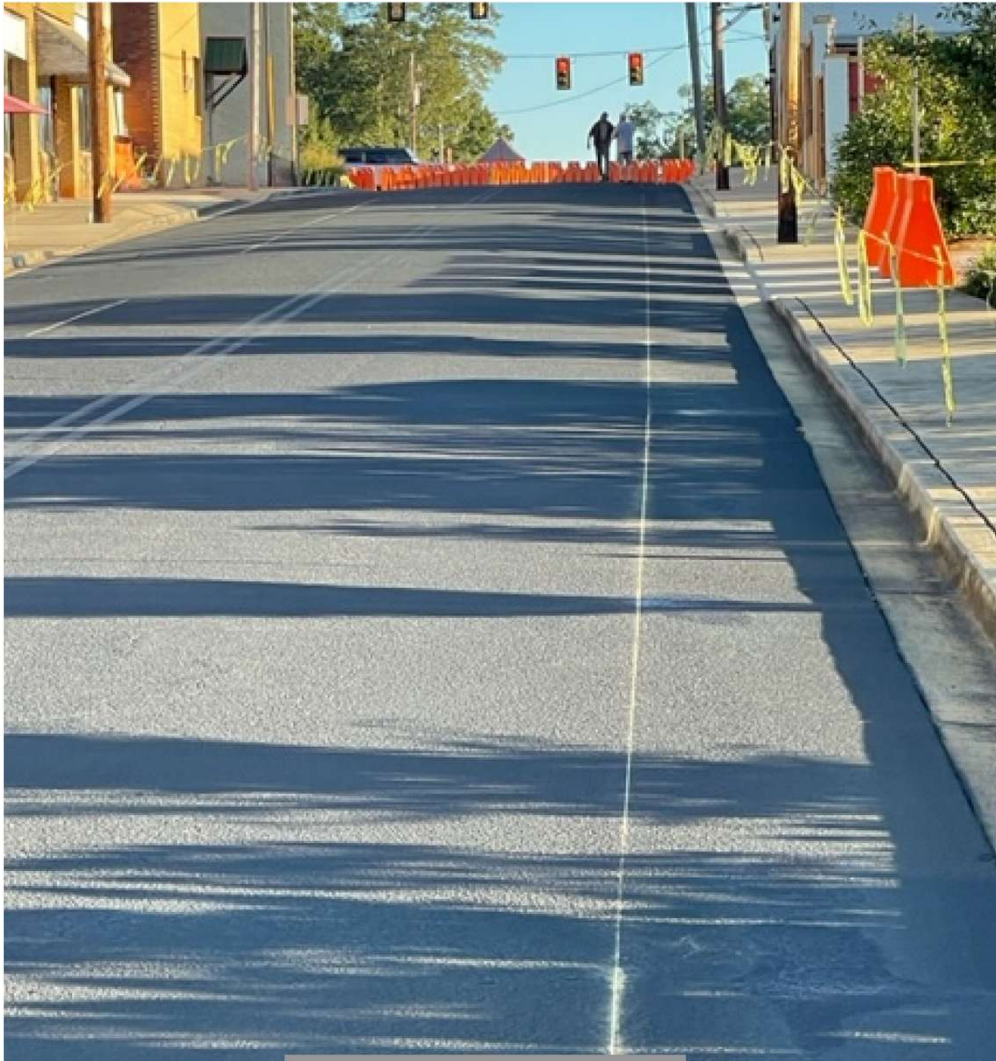
Long-Term

- ① Add decorative crosswalks along East Broad Street.
- ② Add trailhead related improvements that will help expand activities and programs building on the Greenway project. Add two trailhead plaza areas with amenities including bike parking and bike repair stations. Consider sculptural bike rack with railroad theme based on the history of the property.
- ③ Make improvements to Catherine Street block when obtained from SCDOT to close the section of roadway from the existing parking behind the Old St. John's Meeting House to East Mauldin Street. Utilize for activities such as sledding and fitness.
- ④ Add larger play area. Consider themed equipment based on the railroad history of the property. Other improvements, such as community gardens and stream access, can be considered.
- ⑤ Add multi-purpose space / amphitheater



Walhalla Green Space & Historic Center Planning Project

Catherine Street Progress



Walhalla Green Space & Historic Center Planning Project

Wanderweg Progress



For More Information
See SCAPA Website:
<https://scapa.org/cpat/>