



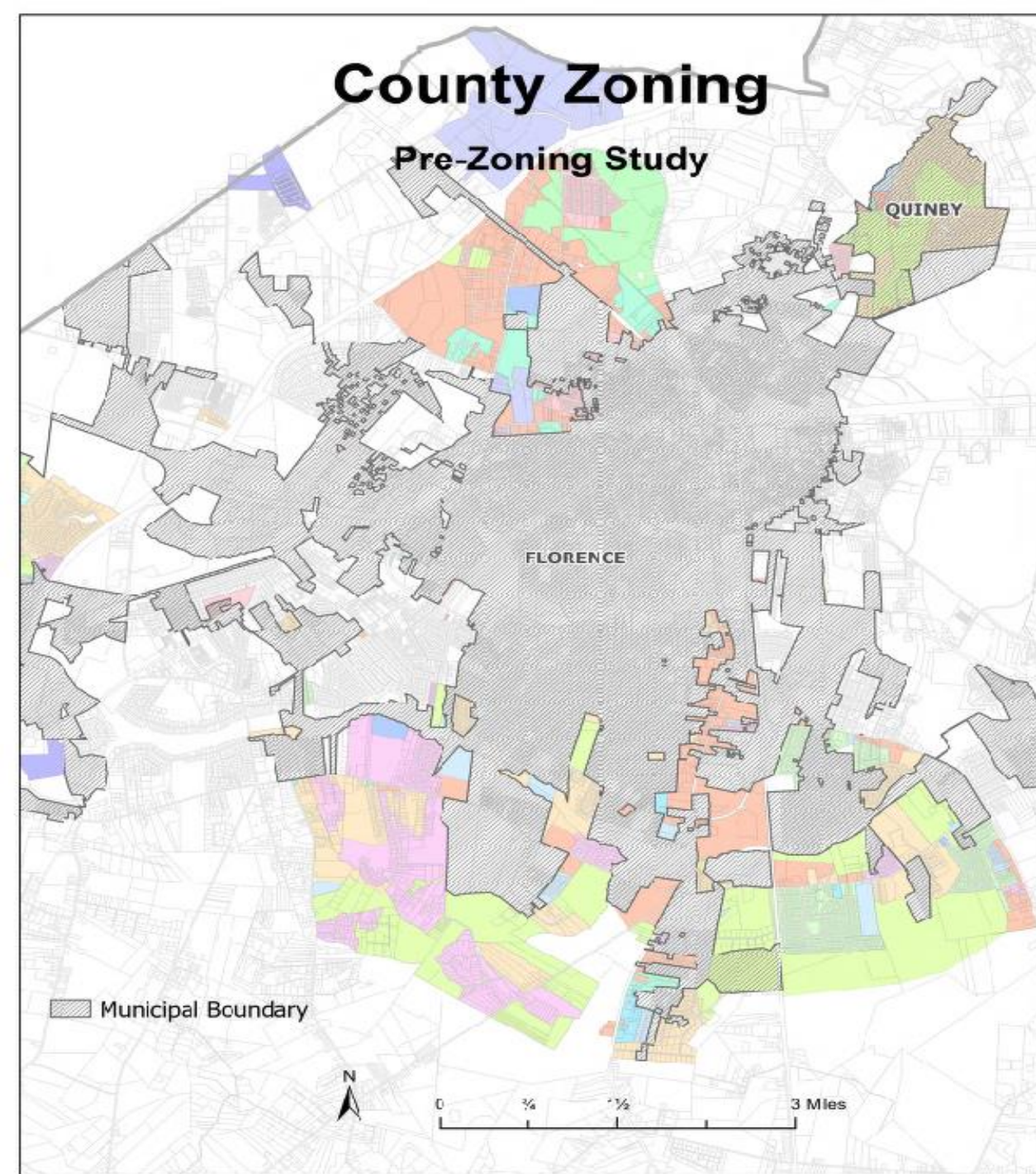
Dealing With Doughnut Holes



2024 Spring
Conference
Orangeburg, SC

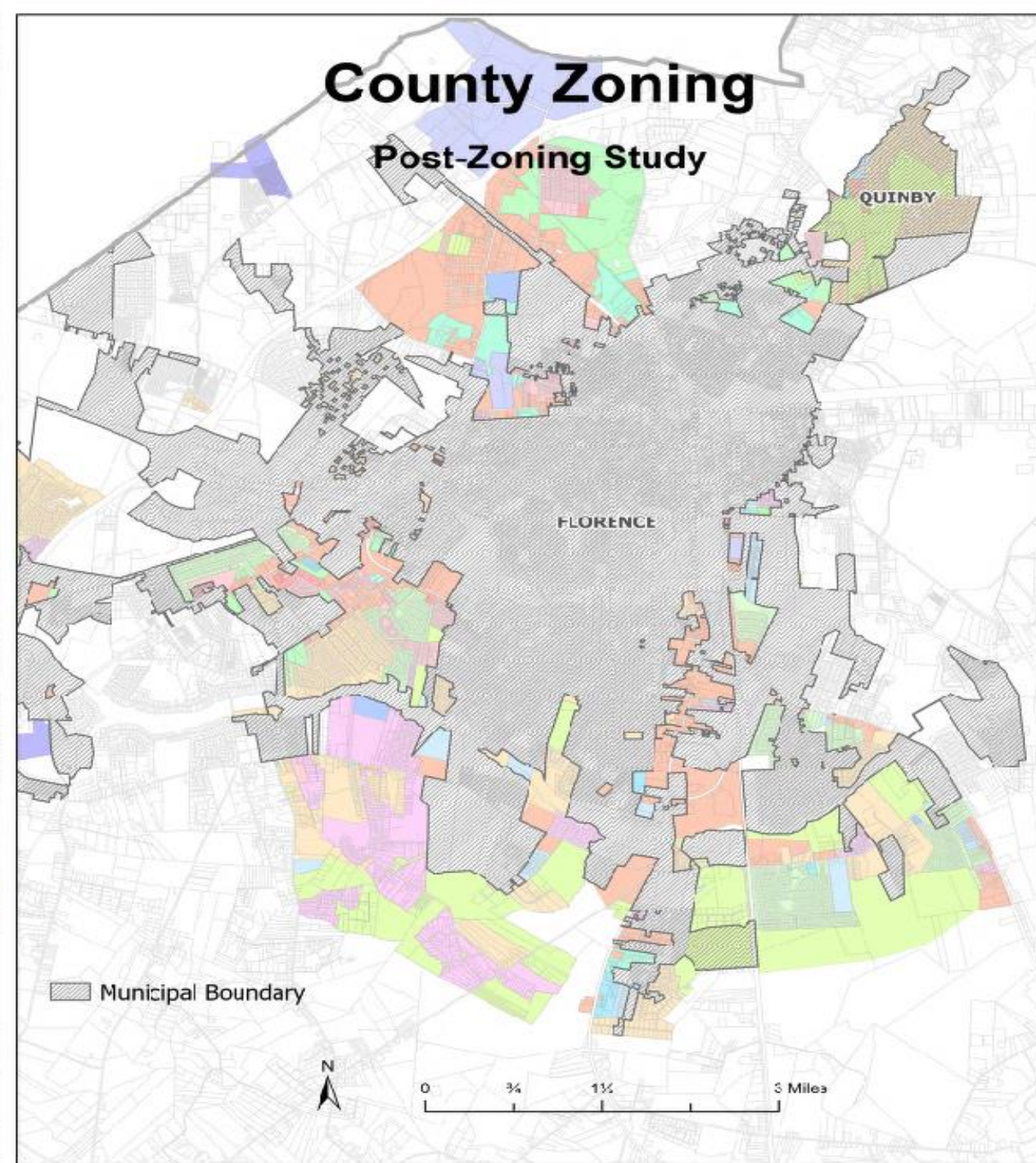
County Zoning

Pre-Zoning Study



County Zoning

Post-Zoning Study



Zoning Study Area

LAKE CITY

QUINBY

FLORENCE

JOHNSONVILLE

- Municipal Boundary
- Existing County Zoning
- Zoning Study (2187)

0 1/4 1/2 1 Miles

0 1/4 Miles

0 1 1/2 Miles

52

52

76

51

51

301

52

378

341

341

41/51

301

341

378

341

301

341

378

341

301

341

378

341

378

341

301

341

378

341

301

341

378

341

301

341

378

341

301

341

378

341

301

341

378

341

301

341

378

341

301

341

378

341

301

341

378

341

301

341

378

341

301

341

378

341

301

341

378

341

301

341

378

341

301

341

378

341

301

341

378

341

301

341

378

341

301

341

378

341

301

341

378

341

301

341

378

341

301

341

378

341

301

341

378

341

301

341

378

341

301

341

378

341

301

341

378

341

301

341

378

341

301

341

378

341

301

341

378

341

301

341

378

341

301

341

378

341

301

341

378

341

301

341

378

341

301

341

378

341

301

341

378

341

301

341

378

341

301

341

378

341

301

341

378

341

301

341

378

341

301

341

378

341

301

341

378

341

301

341

378

341

301

341

378

341

301

341

378

341

301

341

378

341

301

341

378

341

301

341

378

341

301

341

378

341

301

341

378

341

301

341

378

341

301

341

378

341

301

341

378

341

301

341

378

341

301

341

378

341

301

341

378

341

301

341

378

341

301

341

378

341

301

341

378

341

301

341

378

341

301

341

378

341

301

341

378

341

301

341

378

341

301

341

378

341

301

341

378

341

301

341

378

341

301

341

378

341

301

341

378

341

301

341

378

341

301

341

378

341

301

341

378

341

301

341

378

341

301

341

378

341

301

341

378

341

301

341

378

341

301

341

378

341

301

341

378

341

Zoning Study Groups

QUINBY

FLORENCE

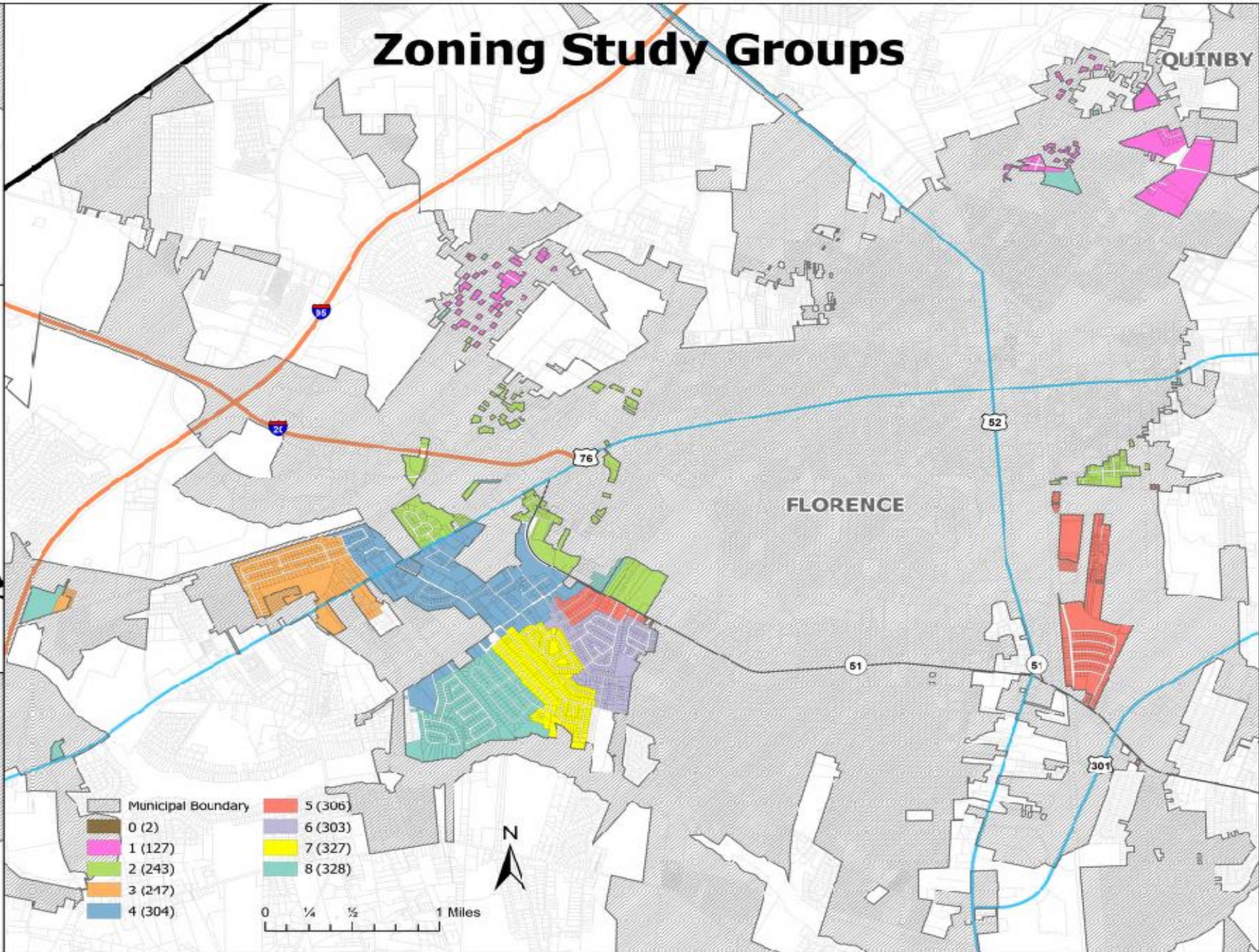
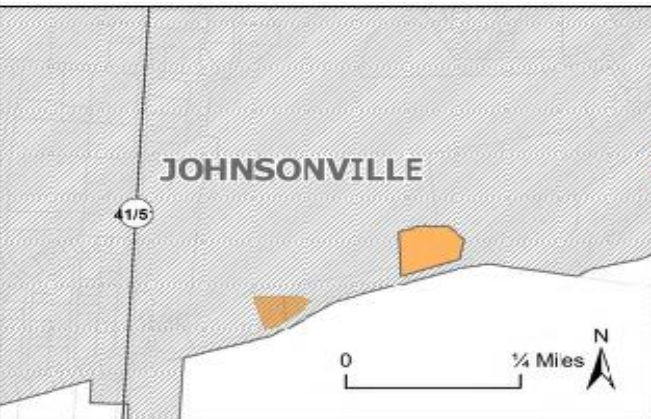
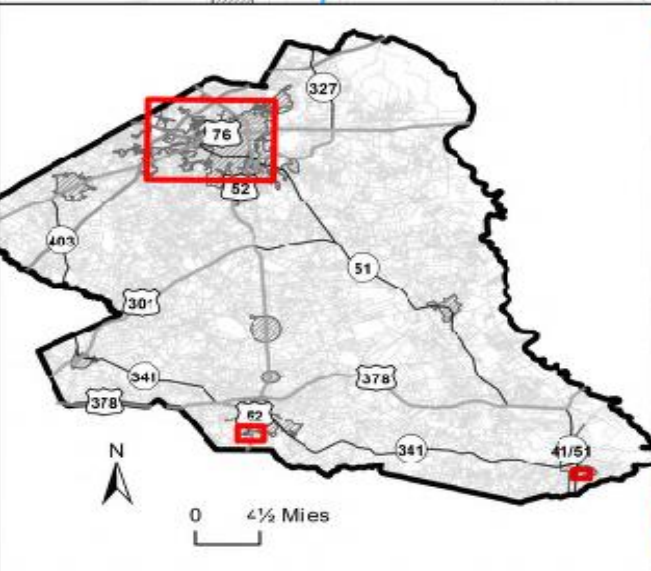
JOHNSONVILLE

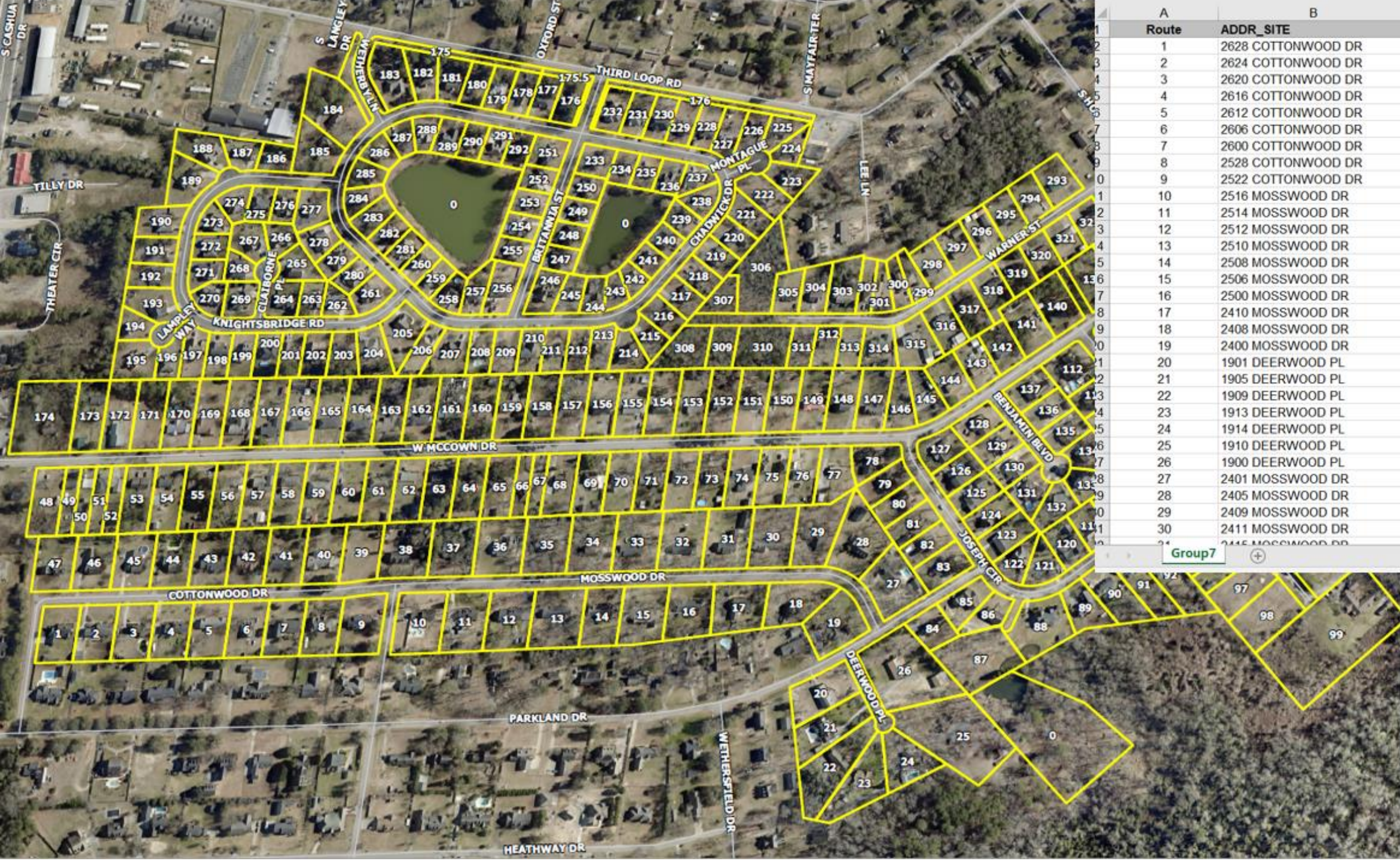
Municipal Boundary

- 0 (2)
- 1 (127)
- 2 (243)
- 3 (217)
- 4 (304)

- 5 (306)
- 6 (303)
- 7 (327)
- 8 (328)

0 1/4 1/2 1 Miles





A	B	C
Route	ADDR_SITE	TMS
1	2628 COTTONWOOD DR	00125-01-112
2	2624 COTTONWOOD DR	00125-01-113
3	2620 COTTONWOOD DR	00125-01-114
4	2616 COTTONWOOD DR	00125-01-115
5	2612 COTTONWOOD DR	00125-01-116
6	2606 COTTONWOOD DR	00125-01-117
7	2600 COTTONWOOD DR	00125-01-111
8	2528 COTTONWOOD DR	00125-01-118
9	2522 COTTONWOOD DR	00125-01-119
10	2516 MOSSWOOD DR	01252-01-010
11	2514 MOSSWOOD DR	01252-01-011
12	2512 MOSSWOOD DR	01252-01-012
13	2510 MOSSWOOD DR	01252-01-013
14	2508 MOSSWOOD DR	01252-01-014
15	2506 MOSSWOOD DR	01252-01-015
16	2500 MOSSWOOD DR	01252-01-016
17	2410 MOSSWOOD DR	01252-01-017
18	2408 MOSSWOOD DR	01252-01-018
19	2400 MOSSWOOD DR	01252-01-019
20	1901 DEERWOOD PL	01252-01-039
21	1905 DEERWOOD PL	01252-01-038
22	1909 DEERWOOD PL	01252-01-037
23	1913 DEERWOOD PL	01252-01-036
24	1914 DEERWOOD PL	01252-01-035
25	1910 DEERWOOD PL	01252-01-034
26	1900 DEERWOOD PL	01252-01-032
27	2401 MOSSWOOD DR	01252-01-020
28	2405 MOSSWOOD DR	01252-01-021
29	2409 MOSSWOOD DR	01252-01-022
30	2411 MOSSWOOD DR	01252-01-023
31	2415 MOSSWOOD DR	01252-01-024

Group7 +



Dealing With Doughnut Holes



2024 Spring
Conference
Orangeburg, SC