



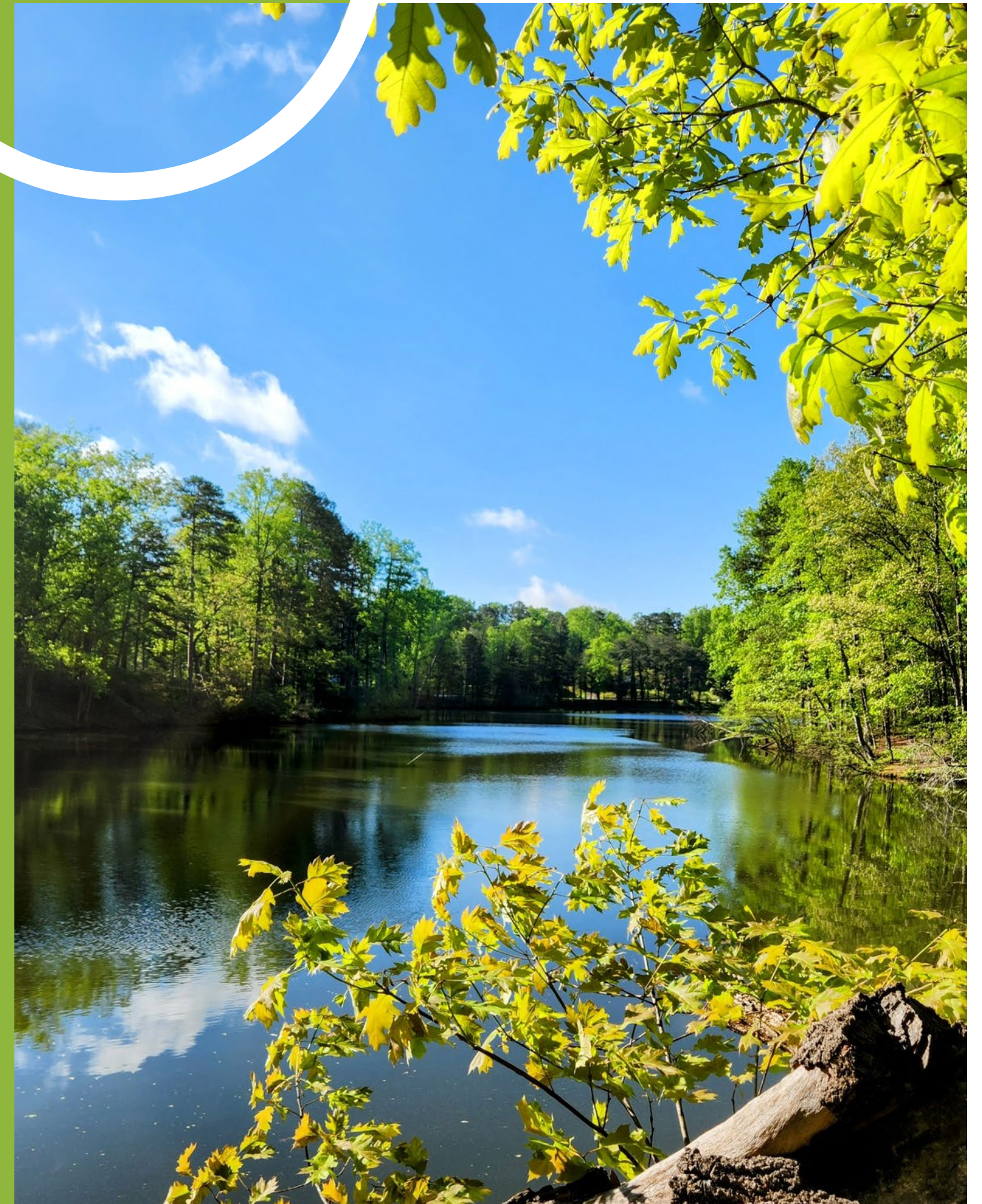
PLAY.
ADVOCATE.
LIVE WELL.

The power of healthy living for ALL



Our Vision for Spartanburg

In Spartanburg, healthy living comes naturally. It is fun, easy, and safe because we are connected to our community, to each other, and to the nature that surrounds us. We utilize our vast natural resources, gardens, local markets, trails, and parks routinely. We walk and bike through our neighborhoods, play outdoors and share healthy meals. We embrace our wonderful quality of life.





2024-2028

STRATEGIC FRAMEWORK

FOUR KEY PRIORITIES ➤ ACTION ITEMS ➤ MEASUREMENTS OF SUCCESS

DEVELOP THE DAN AND SALUDA GRADE TRAIL SYSTEMS

THE DAN

- 20 additional miles of the Dan are built.
- 20 additional miles of the Dan under development.
- Double the number of households within a 1 mile radius of a trail segment.

SALUDA GRADE TRAIL

- Own the Saluda Grade Railroad.
- Build the first 5 miles.



AMPLIFY ADVOCACY



- Actively influence public policies aimed at enhancing active living and promoting healthy eating.
- Increase financial and political support at local, state, and federal levels.

Implement strategic marketing and communications.

- 10K people Eat Local.
- 1M trail uses thanks to Do the Dan campaign.

ADVANCE HEALTHY EATING AND ACTIVE LIVING BEYOND THE TRAIL WORK

- Scale the PAL Food Hub
 - Prioritize the donation of fresh produce.
 - Broaden access to local food for all community members.

- Involve more community partners in healthy eating and active living.
- Increase local food consumption opportunities in at least 1 school district.



ENSURE CONTINUITY AND SUSTAINABILITY



- Fortify our team through comprehensive succession planning and targeted staff development.

- Grow our financial resources to cover operational costs.

- Leverage technology to maximize our mission's impact.

MISSION:

Creating Equitable Opportunities for Active Living and Healthy Eating in Spartanburg County.

TRAIL DEVELOPMENT



theDAN

THE DANIEL MORGAN TRAIL SYSTEM

630,780

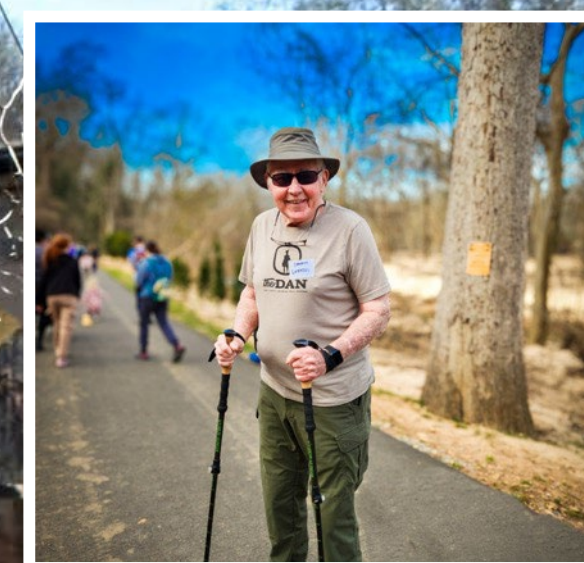
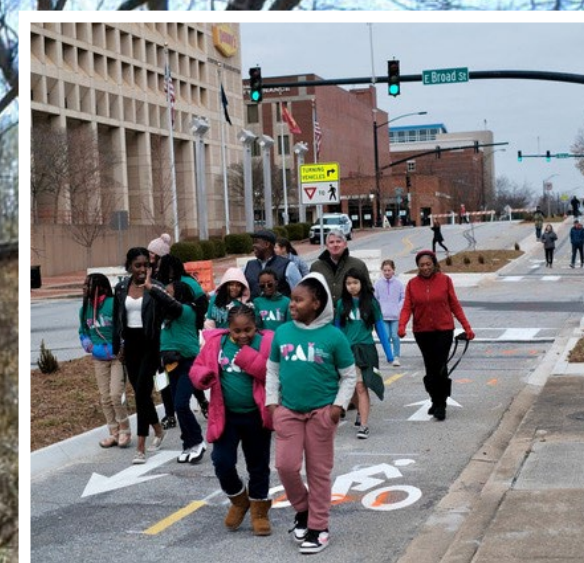
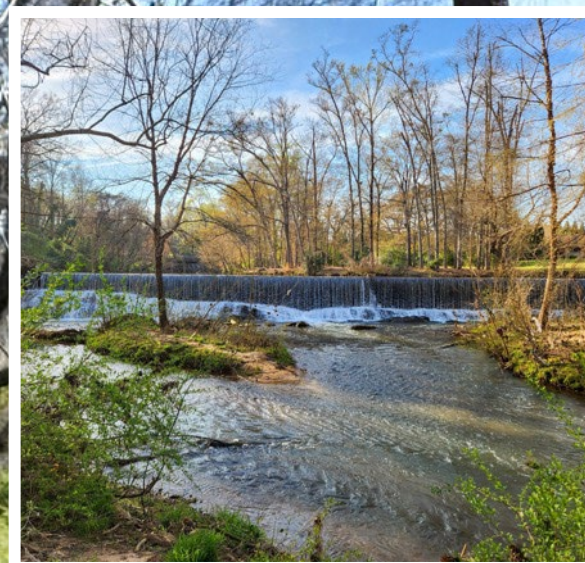
DAN TRAIL
USES in 2023



PASSES
THROUGH

16

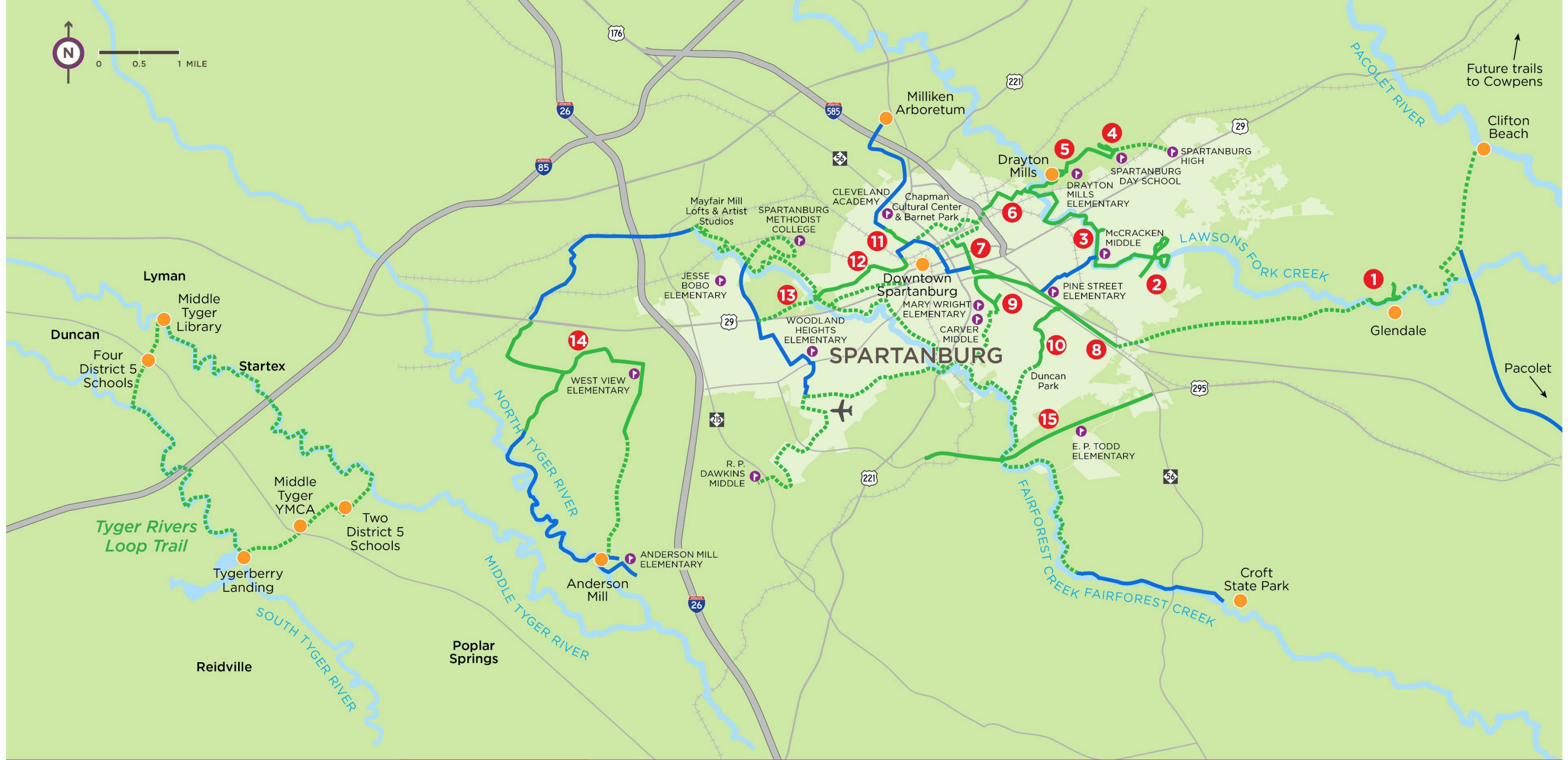
AREAS DESIGNATED AS EITHER
AREAS OF PERSISTENT
POVERTY OR HISTORICALLY
DISADVANTAGED
COMMUNITIES



The Benefits of Trails – Our Why!

- Improve quality of life and place
- Improve health
- Expand outdoor recreation
- Grow local economies
- Highlight our history
- Provide transportation options
- Connect economic centers, schools, destinations
- Improve safety





THE DAN TRAIL Implementation Plan

TRAILS KEY

- 1 Glendale Shoals Trail
- 2 Cottonwood Trail
- 3 River Birch Trail
- 4 Upper Drayton Trail
- 5 Lower Drayton Trail
- 6 Beaumont Trail
- 7 Hub City Hopper
- 8 Mary Black Foundation Rail Trail

- 9 Mary H. Wright Greenway
- 10 Duncan Park Trail
- 11 Butterfly Branch Greenway
- 12 Robert Smalls Unity Trail
- 13 Three Creeks Trail
- 14 Wadsworth Trail
- 15 Southport Road Trail

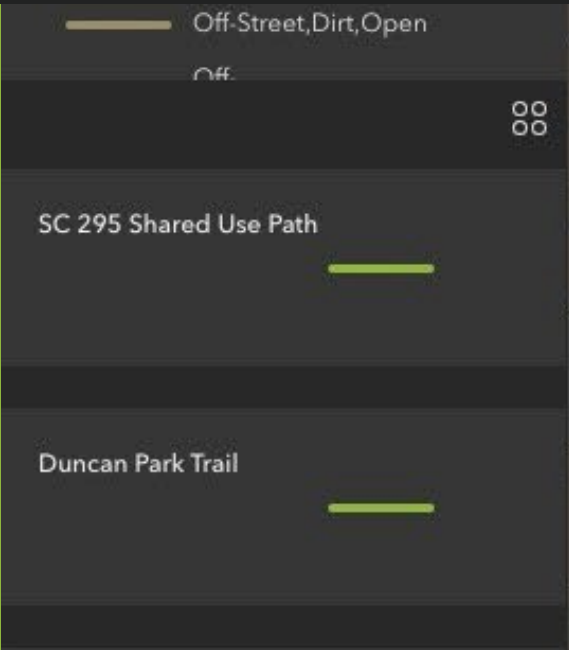
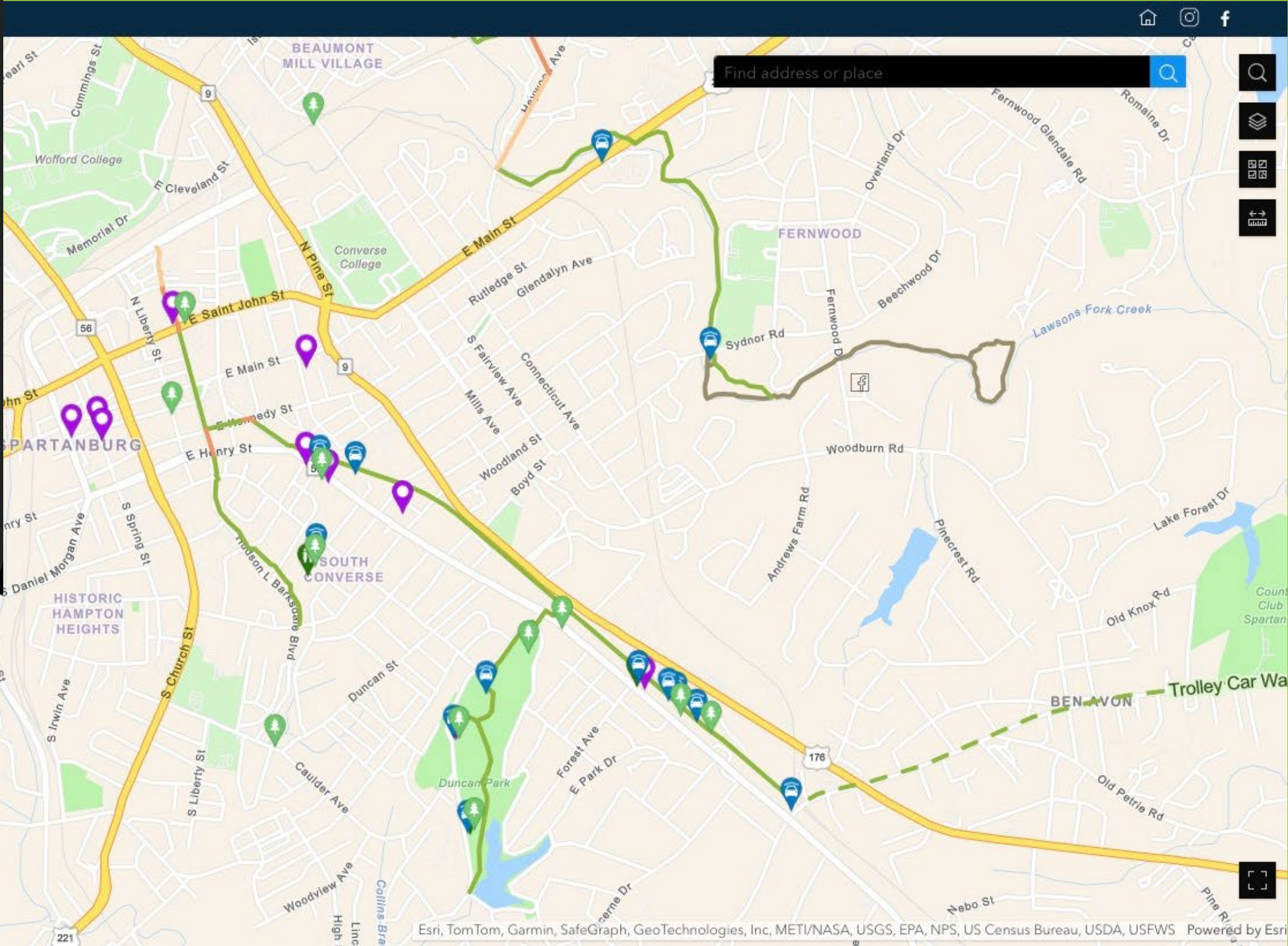
- Existing Trail
- - - - Development Underway
- Future Trail
- Stream

- School
- Destination
- Railroad
- City Limits

RAISE GRANT

13 ½ miles of trail mostly along the Fairforest





A More Connected Community

The Hub City Hopper Segment



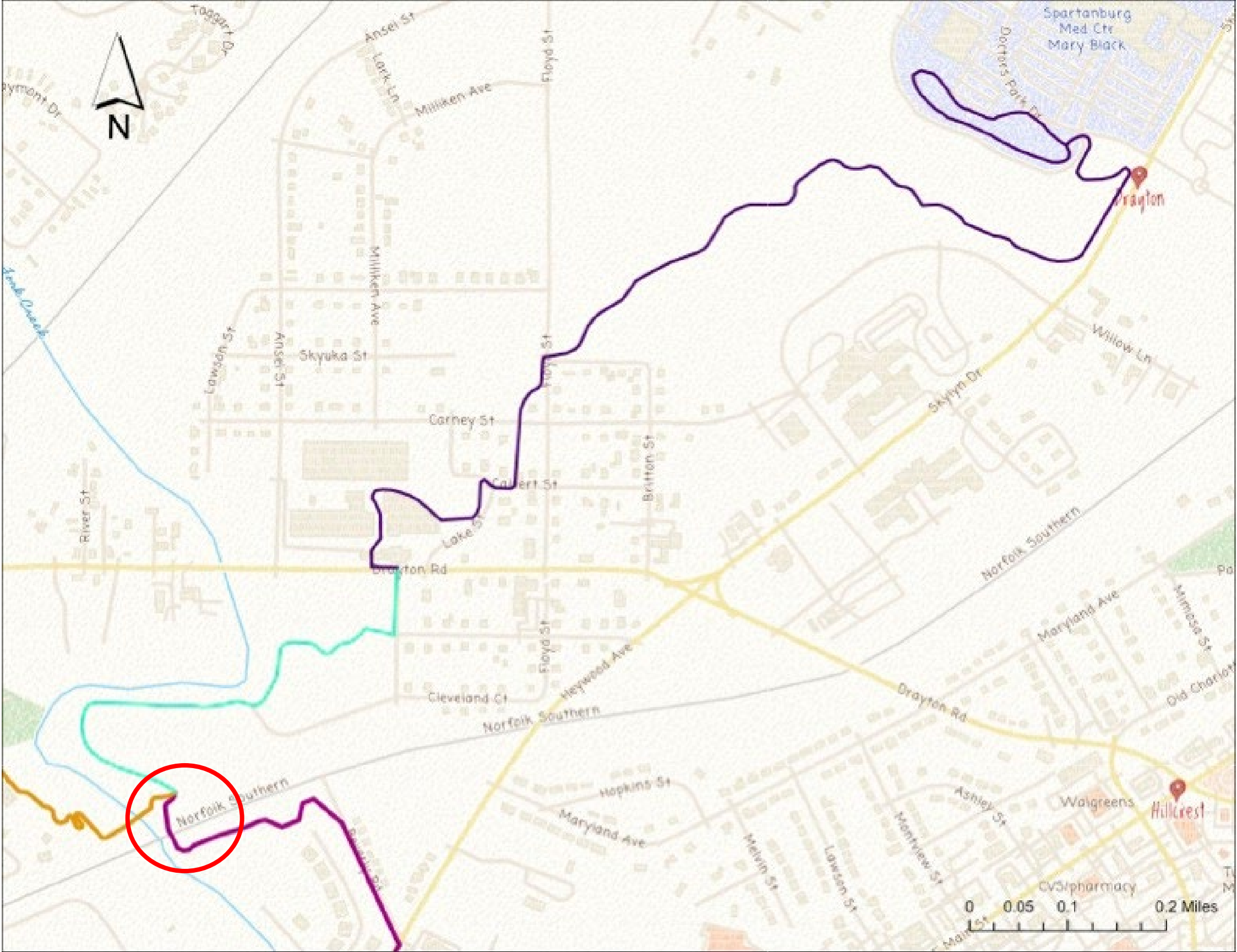
The Lower Drayton Segment



The River Birch Segment



Building Relationships



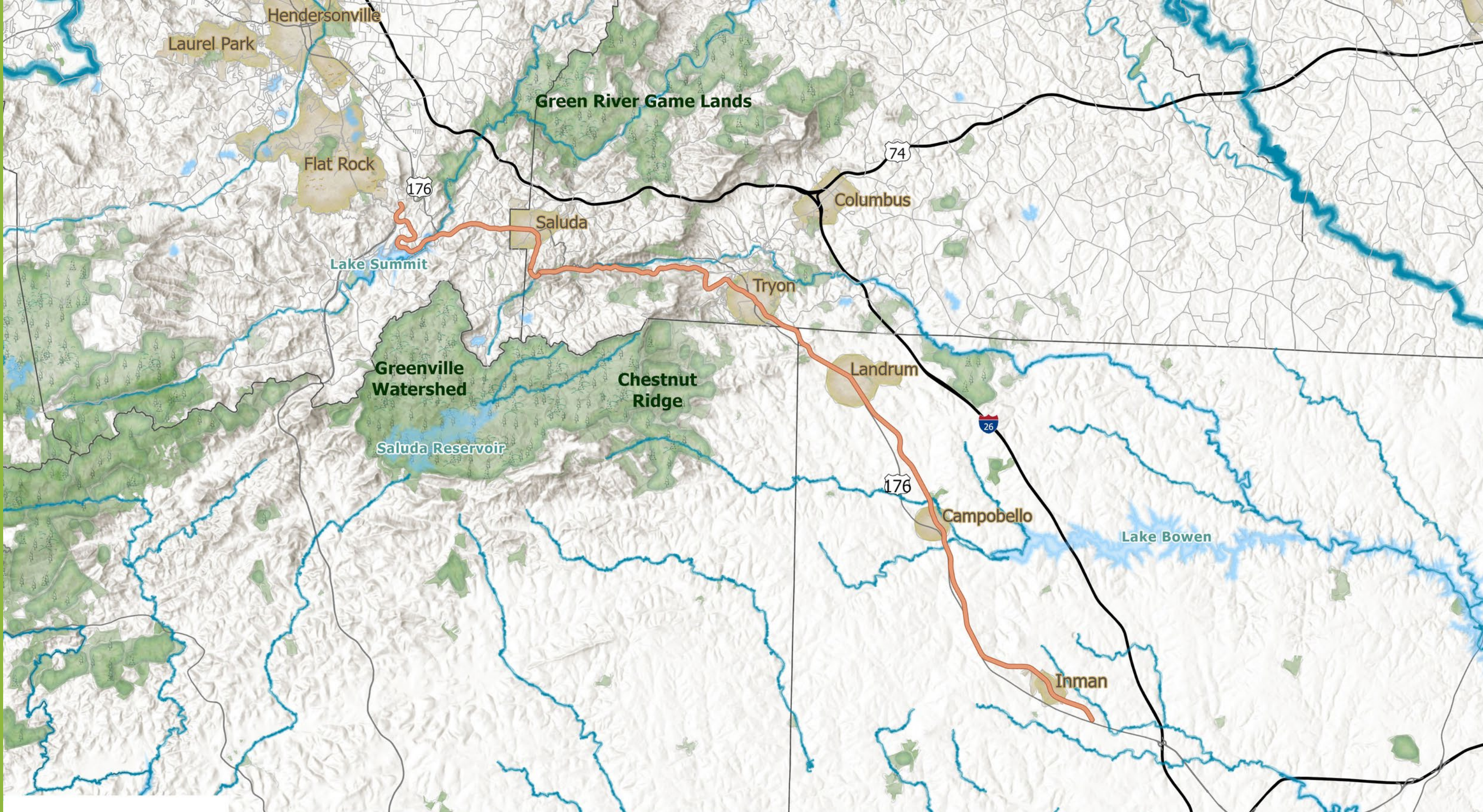


SALUDA GRADE T R A I L




WANT THE
LATEST ON THE
PROJECT?

SIGN UP FOR EMAIL UPDATES AT:

[SALUDAGRADETRAIL.ORG](https://saludagradetrail.org)



Legend

-  Proposed Saluda Grade Rail Trail, 31 Miles
-  Protected Lands
-  Municipalities



Economic Driver

THE ECONOMIC IMPACT OF PAL'S TRAILS



EVERY \$1 MILLION INVESTED IN TRAILS CREATES \$1.52 MILLION IN ECONOMIC IMPACT AND ACTIVITY FOR THE COMMUNITY.

THIS INCLUDES:

TRAIL DEVELOPMENT

TRAIL USERS

TRAIL CONSTRUCTION

IMPACTS

The trail is an important part of marketing projects and helps sell the project to renters, buyers, and commercial tenants.

Business owners said that on good weather weekends a significant portion of their business is trail users who have arrived on foot or bike.

Several developers said they are actively looking for new land in the trail corridor for future projects; one said he has purchased property in the corridor.

All developers said that the trail adds economic value to projects and is a very important quality of life amenity.

TRAIL CONSTRUCTION IMPACTS

JOBS SUPPORTED



Completed and In progress trails

Once all trail segments are completed

TOTAL OUTPUT

TOTAL EFFECT SPENDING ON TRAIL CONSTRUCTION HAS ON SPARTANBURG COUNTY



Completed and In progress Trails

Once all trail segments are completed



PLAY.
ADVOCATE.
LIVE WELL.

ECONOMIC IMPACT

DESTINATIONS!





One Spartanburg report finds that
“Recreation” is the #2 reason for people
visiting to Spartanburg



Active Spaces

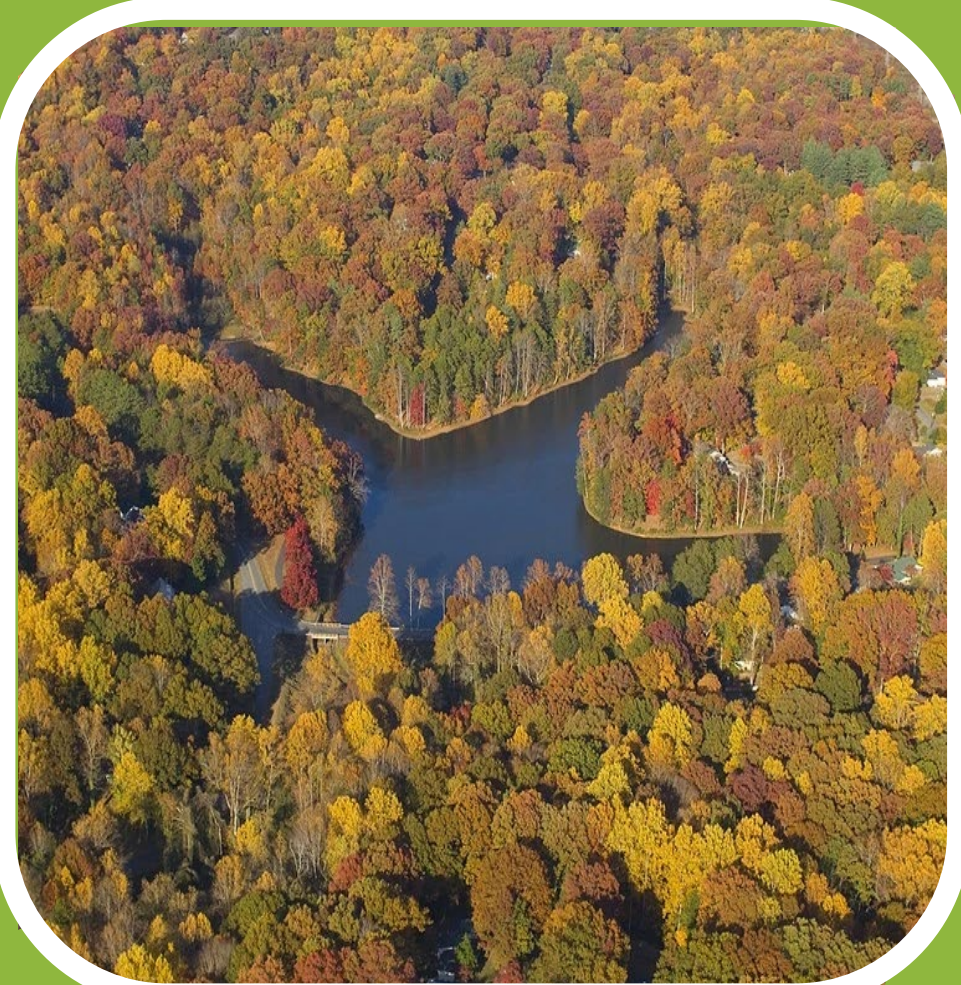


Advocate for and promote community play spaces

- Duncan Park
- The Rail Yard Community Park
- Parks Equity Study



Duncan Park Revitalization Project



Trail & Invasive
Plant Improvement



Community
Engagement



Location of Future
ADA Boat Dock

TRAIL STEWARDSHIP



How to Get Involved



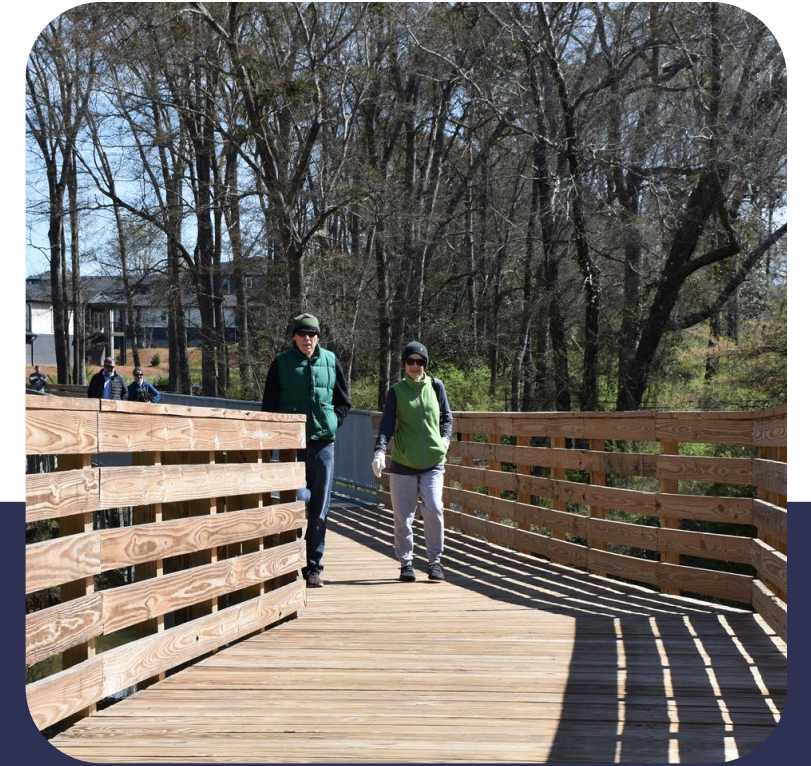
✓ Donate



✓ Volunteer



✓ Join us at our events



✓ Use the trails

✓ Buy from the PAL Food

✓ Subscribe to our e-blast

palspartanburg.org

